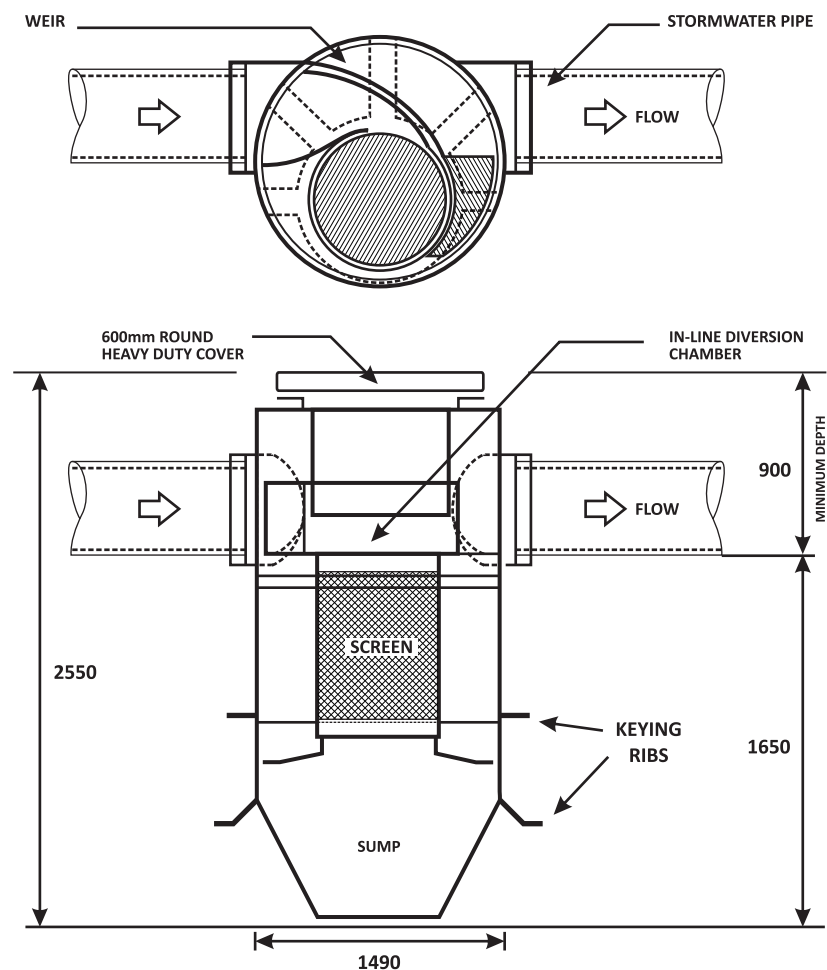


GROSS POLLUTANT TRAP SPECIFICATIONS



There are many benefits to The GPT-25, including but not limited to:

- ✓ Manufactured from fibreglass making this durable yet light-weight construction easy to install in a variety of places.
- ✓ The design allows for highly effective removal of Silt and Oil with minimal maintenance.
- ✓ The range accommodates pipe sizes; 450mm, 525mm, and 600mm in diameter. Flow rates up to 798 L/sec, allowing specific selection for most design criteria, and treatment of up to 95% of annual stormwater runoff.
- ✓ A choice of lid options to suit all loading requirements.
- ✓ The economical and environmentally sound stormwater treatment solution.
- ✓ Anti-Flotation keying ribs



Model	Pipe Size	Order Code
GPT-25-450	450mm	AGL-GPT-25-450
GPT-25-525	525mm	AGL-GPT-25-525
GPT-25-600	600mm	AGL-GPT-25-600



GROSS POLLUTANT TRAPS GPT-25

INNOVATIVE ENVIRONMENTAL TECHNOLOGIES



APPLICATIONS FOR THE GPT-25

The GPT-25 has been developed for a range of applications with any stormwater pipe up to 600mm diameter, including:

- ✓ Council work depots
- ✓ Bus and train stations
- ✓ Roadside drains
- ✓ Packaging warehouses
- ✓ Carparks
- ✓ Industrial sites
- ✓ Small subdivisions
- ✓ Pre-detention
- ✓ Airports

LARGER MODELS ALSO AVAILABLE!

Contact Aglass for further information or visit our
website: www.aglass.com.au

THE GPT-25 IN-LINE IS ONE OF THE SMALLEST IN THE GROSS POLLUTANT TRAP RANGE.

The GPT-25 is ideally suited for installation at the collection source in small catchment areas and is designed to remove gross pollutants, organic waste, silt, sediment and oils.

CHARACTERISTICS

Lightweight & compact one piece unit with lifting lugs

Risers available to allow depth of 4m to pipe invert

Easy installation for all pipes up to 600mm diameter*

Maximum design flow = 798 L/s (capacity)

For use in systems where pipe and fittings under 100mm
are not permitted

Captures up to 95% of pollutant particles over 1mm

Captures 80% of sediment down to 75 microns

For catchment areas up to 20,000m² (2 ha)

Gross weight 180kg

* See Specifications on reverse side.

TYPICAL INSTALLATION

Complete installation instructions supplied with each unit. Simple steps for excavation, location, connection and backfill. Risers and Access Covers are available if necessary.

CLEANING OPTIONS

Designed for suction cleaning/pump out with standard vehicle mounted systems.